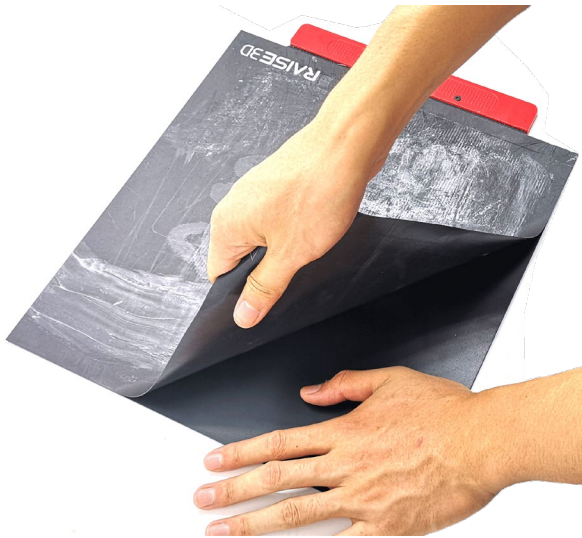


# Pro2 Build Surface Installation Instruction

## STEP 1: Remove the Old Build Surface

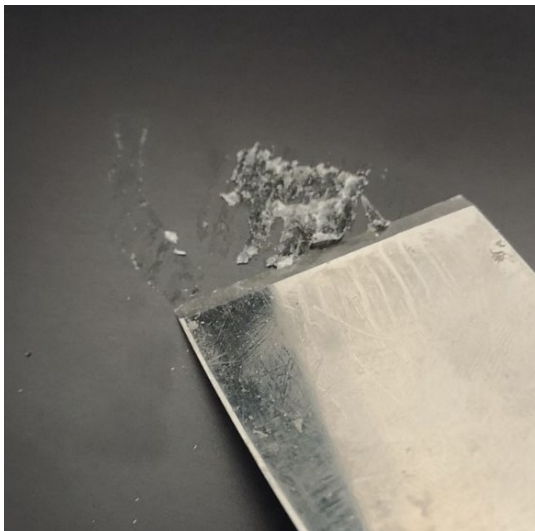
Take the Build Plate out from the printer.

Hold the Build Plate by one hand and separate the old Build Surface from the plate with the other hand.



## STEP 2: Clean Build Plate

- If there is remaining glue left on the Build Plate after removing the old Build Surface, please clean it by scraper carefully.



- If there has some glue hard to be clean off by scraper, please put the plate back and set the bed temperature to be 230°C and wait for about 30 minutes. Then try with scraper again.

### STEP 3: Assemble new Build Surface

Remove the film at the back of Build Surface and apply it with Build Plate.  
Please

Install the Build Plate back.



-END-